

Circpack assists companies which are looking to...

- Understand **what makes a packaging format recyclable** and want to know the main rules of recyclability
- **Assess and improve** the recyclability of their packaging
- Develop new packaging and **need guidance** on concrete solutions for ensuring its recyclability
- **Certify** the recyclability of their packaging
- Understand **geographical differences** in recycling

Explore sustainable packaging solutions with CIRCPACK® and our experts at circpack@veolia.com

CIRCPACK
by **VEOLIA**



www.circpack.veolia.com

Recycling Intelligence Platform

For more information on our recycling intelligence services, you can also refer to our ReCore platform:

CIRCPACK
by **VEOLIA**
ReCoRe
Recycling Country Report
BROCHURE

ReCoRe is an interactive platform that provides comprehensive information on packaging recycling worldwide. It covers legal requirements, fees and taxes, collection guidelines, sorting and processing infrastructures, and recycling data. The platform is designed for all stakeholders in the packaging industry, including producers and users operating on an international scale.

Why us?

As an independent subsidiary of the Veolia group, CIRCPACK® combines our unique access to recycling facilities with theoretical and operational expertise. This gives us the ability to offer a tailored, data-driven approach to packaging waste management: the ReCoRe platform.

Our solution simplifies compliance with:
✓ evolving waste legislation,



www.recore-circpack.veolia.com

CIRCPACK
by **VEOLIA**

Certification Services

We ensure the recyclability of your packaging

What are your next steps to make your packaging recyclable?



We support brand owners, packaging companies and retailers in their quest for circular packaging.

Certification Services

CIRCPACK Recyclability Testings

CIRCPACK is providing tests on various steps of the recycling value chain



Waste Collection

Compact and Friction Test

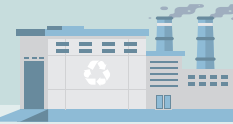


Sorting

Operational Sorting Test



The operational tests are done in our operational sorting facilities to have insights on how packaging behaves **on site**



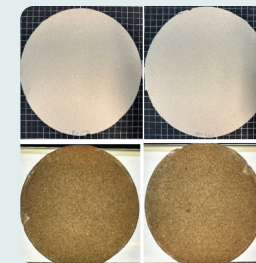
Reprocessing

Quick Washing Test

(Labels and adhesives)
Ink bleeding;
Glue removal;
Fibre loss tests



Pulping Test



Application

● Laboratory Tests
● Operational Tests



Our certifications



Letter of compatibility

To classify the technical recyclability of a semi-finished plastic packaging within the european market



Recyclability rate

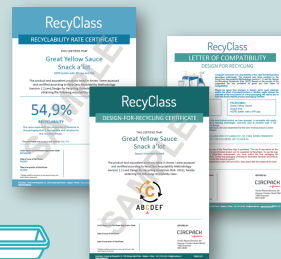
To classify and rates the technical recyclability of packaging in a specific country



Design for recycling

To classify the technical recyclability of packaging within the european market

RecyClass
(Plastic)



CERTIFY
(Paper,
Cardboard,
Metals, Glass)



How does it work?



1. PRELIMINARY DATA



2. SORTING TESTS



3. REPROCESSING TESTS



4. AUDIT REPORT



5. CERTIFICATE



6. USE OF LOGO

At each step of the process, we ensure that your packaging undergoes the necessary **evaluations to meet industry standards for recyclability** with our **operational knowledge** of sorting and recycling facilities.