

Our Users

The **ReCoRe platform** is the tool your company needs for:



Packaging Engineers

Quickly assess the recycling performance of packaging formats across multiple countries.



Brand Managers

Understand whether fees and taxes apply in specific markets.



Compliance Officers

Ensure adherence to packaging laws across different regions.



Marketing Teams

Easily verify packaging sustainability claims and compliance with local regulations across multiple markets.



Sustainability Officers

Benchmark your company's packaging sustainability.



Sales Managers

Evaluate potential new markets for eco-friendly packaging products.

Our customers are typically "Brand Owners" or "Packaging Manufacturers".

As a brand owner or packaging manufacturer, you want to opt for sustainable, even recyclable packaging. But how can you make sure that your packaging really is recyclable?

Explore sustainable packaging solutions with **CIRCPACK®** and delve into **ReCoRe**, our interactive platform, offering insights on global recycling systems.

To learn more and consult with our experts, contact us at circpack@veolia.com

ReCoRe



www.recore-circpack.veolia.com

CIRCPACK
by **VEOLIA**

CIRCPACK®



www.circpack.veolia.com

CIRCPACK
by **VEOLIA**

ReCoRe Recycling Country Report

BROCHURE

ReCoRe is an interactive platform that provides comprehensive information on packaging recycling worldwide. It covers legal requirements, fees and taxes, collection guidelines, sorting and processing infrastructures, and recycling data. The platform is designed for all stakeholders in the packaging industry, including producers and users operating on an international scale.

Why us?

As an independent subsidiary of the Veolia group, **CIRCPACK®** combines our unique access to recycling facilities with theoretical and operational expertise. This gives us the ability to offer a tailored, data-driven approach to packaging waste management: **the ReCoRe platform**.

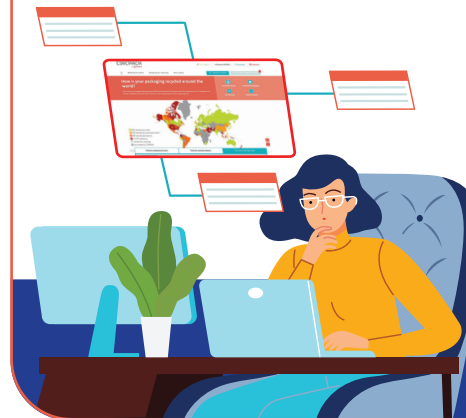
Our solution simplifies compliance with:

- ✓ evolving waste legislation,
- ✓ EPR requirements,
- ✓ labelling norms and more.



With global coverage and expert insight from the Veolia network, **ReCoRe** gives you the tools to ensure that your packaging meets the highest environmental standards.

ReCoRe provides **validated recycling data** and **up-to-date information** on waste collection and sorting for various materials. Its user-friendly interface and **dynamic map** allow for easy navigation and quick access to data, customised to meet specific customer needs.



In short, **ReCoRe** equips users with the tools and insights necessary for effective packaging waste management and sustainable practices.

Country Reports

Supplementing our dynamic map, all countries are supported by a full report detailing local specificities.

These reports include the following and more:

A standardised structure

In-depth overviews of local requirements and value chains

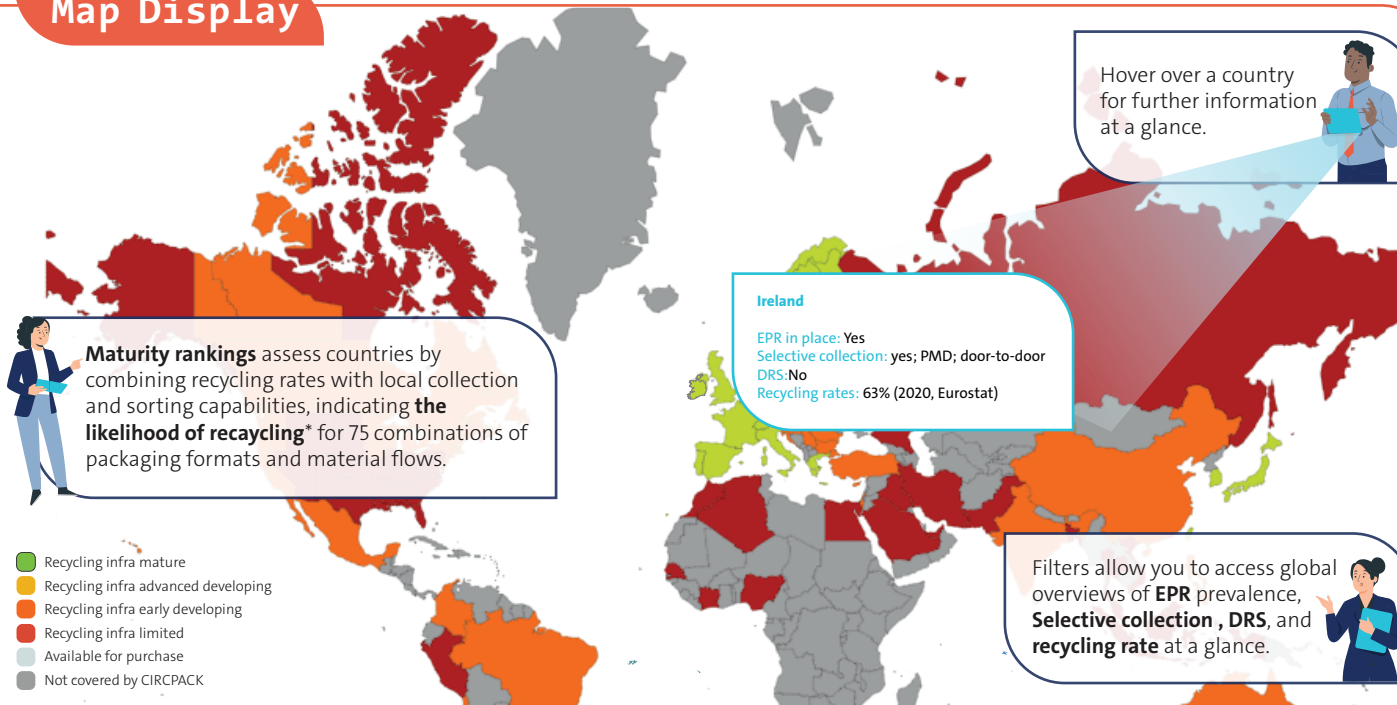
Fees and taxes, alongside example calculations

Holistic descriptions of recycling environments, including coverage of the informal sector

Visit our

[Italy Country Report for free](#)
to see one of our reports in action

Map Display



*Based on a format or material flow successfully being collected, properly sorted into the highest available stream, and eventually reprocessed. This metric is used in order to give an answer which is as targeted as possible, while applying to many format variations.

Notification Centre



Legislation, EPR fees, and various aspects of your packaging's sustainability are rapidly evolving topics. We're here to help you stay up-to-date with our dynamic notification system!

With access to **ReCoRe**, you'll receive updates every two weeks on the latest developments in the countries where you do business.

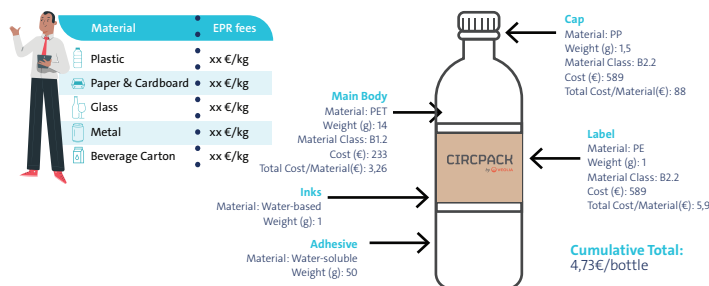
Standard report structure



- ✓ Country Overview
- ✓ EPR fees and taxes
- ✓ Collection
- ✓ Sorting
- ✓ Reprocessing
- ✓ Recycling results

1 Country overview	2 EPR fees and taxes on packaging	3 Collection
<p>1.1 Waste information</p> <p>Italy is a developed country situated in Southern Europe with a total population of nearly 60 million people. It has a high level of economic development. The country is a high-income country with a high level of economic development. The country is a high-income country with a high level of economic development.</p>	<p>2.1 EPR fees and taxes on packaging</p> <p>Italy has a developed country status in Southern Europe with a total population of nearly 60 million people. It has a high level of economic development. The country is a high-income country with a high level of economic development. The country is a high-income country with a high level of economic development.</p>	<p>3.1 Collection activities</p> <p>Italy has a developed country status in Southern Europe with a total population of nearly 60 million people. It has a high level of economic development. The country is a high-income country with a high level of economic development. The country is a high-income country with a high level of economic development.</p>
4 Sorting	5 Reprocessing	6 Recycling results
<p>4.1 Sorting activities</p> <p>Italy has a developed country status in Southern Europe with a total population of nearly 60 million people. It has a high level of economic development. The country is a high-income country with a high level of economic development. The country is a high-income country with a high level of economic development.</p>	<p>5.1 Reprocessing activities</p> <p>Italy has a developed country status in Southern Europe with a total population of nearly 60 million people. It has a high level of economic development. The country is a high-income country with a high level of economic development. The country is a high-income country with a high level of economic development.</p>	<p>6.1 National results</p> <p>Italy has a developed country status in Southern Europe with a total population of nearly 60 million people. It has a high level of economic development. The country is a high-income country with a high level of economic development. The country is a high-income country with a high level of economic development.</p>

EPR-fees calculations can be tricky but we provide verified sample calculations for standard packaging formats to ensure that you understand how they are applied



All 71 countries have their own report and all have the exact same structure. All following sections have weekly reviews and the last update date is available.

Get access to our PPWR overview page and knowledge center, which also offer Design for Recycling guidelines, a mini-masterclass, certification overviews, and comprehensive FAQs. Enhance your sustainable packaging practices.

Comparison Tool

Gathering information is great, but being able to compare it is even better! **ReCoRe** allows you to compare any subsection of our Country Reports across the 71 countries we cover.

Need a quick overview of the differences in collection activities between Denmark, Brazil and China? With our tool, this takes a few clicks!

